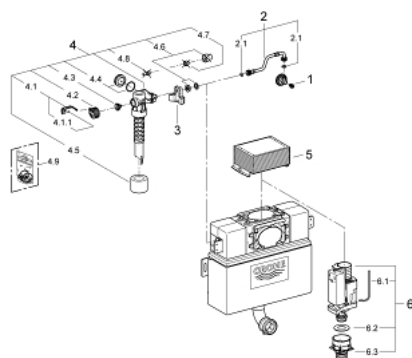


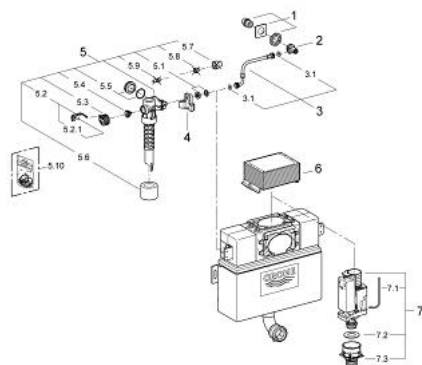
## 38 422 000 FLUSHING CISTERN FOR WC



### RESERVEDELER , juli 2013 – now

- 1: Overdel (Spare part-nr. 42385000)
- 2: Overflow Sleeve (Spare part-nr. 43325000)
- 2.1: O-ring (Spare part-nr. 0319100M)
- 3: Oppheng (Spare part-nr. 42195000)
- 4: Innløpsventil (Spare part-nr. 37095000)
- 4.1: Håndgrep (Spare part-nr. 43734000)
- 4.1.1: Tetning (Spare part-nr. 4377000M)
- 4.2: Ventilhode (Spare part-nr. 43536000)
- 4.3: Membran (Spare part-nr. 4375800M)
- 4.4: Lokk for innløpsventil (Spare part-nr. 43735000)
- 4.5: Valve float, 5 pcs. (Spare part-nr. 4379100M)
- 4.6: Tetningssett (Spare part-nr. 43722000)\*
- 5: Inspection shaft for flushing cistern (Spare part-nr. 42326000)
- 6: AV1 utløpsventil (Spare part-nr. 42314000)
- 6.1: Pneumatic hose (Spare part-nr. 42319000)
- 6.2: Tetning (Spare part-nr. 42310000)
- 6.3: Ventilsete for GD2 (Spare part-nr. 42315000)
- \* Optional accessories

## 38 422 000 FLUSHING CISTERN FOR WC

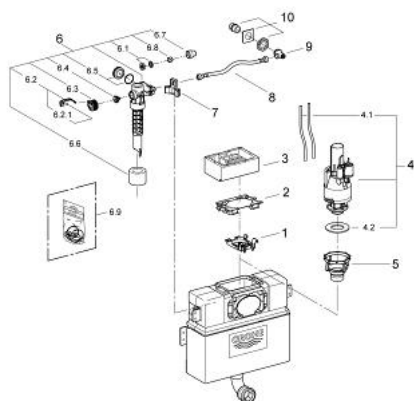


**RESERVEDELER** , august 2007 – juli 2013

- 1: Water supply (Spare part-nr. 42234000)
- 2: Stoppekran (Spare part-nr. 42235000)
- 3: Overflow Sleeve (Spare part-nr. 43325000)
- 3.1: O-ring (Spare part-nr. 0319100M)
- 4: Oppheng (Spare part-nr. 42195000)
- 5: Innløpsventil (Spare part-nr. 37095000)
- 5.1: Håndgrep (Spare part-nr. 43734000)
- 5.1.1: Tetning (Spare part-nr. 4377000M)
- 5.2: Ventilhode (Spare part-nr. 43536000)
- 5.3: Membran (Spare part-nr. 4375800M)
- 5.4: Lokk for innløpsventil (Spare part-nr. 43735000)
- 5.5: Valve float, 5 pcs. (Spare part-nr. 4379100M)
- 5.6: Tetningssett (Spare part-nr. 43722000)\*
- 6: Inspection shaft for flushing cistern (Spare part-nr. 42326000)
- 7: AV1 utløpsventil (Spare part-nr. 42314000)
- 7.1: Pneumatic hose (Spare part-nr. 42319000)
- 7.2: Tetning (Spare part-nr. 42310000)
- 7.3: Ventilsete for GD2 (Spare part-nr. 42315000)

\* Optional accessories

## 38 422 000 FLUSHING CISTERN FOR WC



**RESERVEDELER** , juli 2002 – august 2007

- 1: Traverse (Spare part-nr. 42196000)
- 2: Sprutplate for 37 173 (Spare part-nr. 42199000)
- 3: Protection for maintenance access (Spare part-nr. 42200000)
- 4: Utløpsventil (Spare part-nr. 42774000)
- 4.1: Tubes (Spare part-nr. 42775000)
- 4.2: Seal for Dual Flush discharge valve (Spare part-nr. 4285200M)
- 5: Kurv for utløpsventil (Spare part-nr. 42198000)
- 6: Innløpsventil (Spare part-nr. 37095000)
- 6.1: Håndgrep (Spare part-nr. 43734000)
- 6.1.1: Tetning (Spare part-nr. 4377000M)
- 6.2: Ventilhode (Spare part-nr. 43536000)
- 6.3: Membran (Spare part-nr. 4375800M)
- 6.4: Lokk for innløpsventil (Spare part-nr. 43735000)
- 6.5: Valve float, 5 pcs. (Spare part-nr. 4379100M)
- 6.6: Tetningssett (Spare part-nr. 43722000)\*
- 7: Oppheng (Spare part-nr. 42195000)
- 8: Tilkoblingsslange (Spare part-nr. 42233000)
- 8.1: O-ring (Spare part-nr. 0319100M)
- 9: Stoppekran (Spare part-nr. 42235000)
- 10: Water supply (Spare part-nr. 42234000)

\* Optional accessories