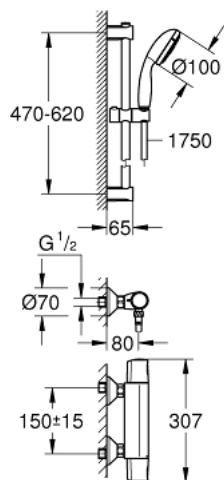


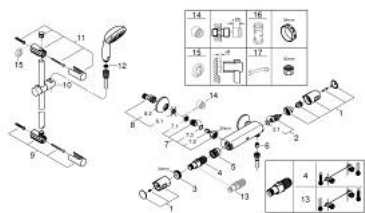
34 237 002 **PRECISION TREND DUSJTERMOSTAT SETT 1/2"**



PRODUKTBESKRIVELSE

- Colour: chrome
- består av:
- Precision Trend Dusjtermostat 1/2" (34 229)
- Vitalio Start 100 shower set, 3 sprays, 600 mm (26 032 000)
- GROHE Water Saving-teknologi for mindre vannforbruk
- Indre WaterGuide for lengre levetid
- GROHE DreamSpray perfekt strålemønster
- GROHE Long-Life overflate
- SpeedClean antikalksystem
- ShockProof silikonring som forhindrer ødelagte dusjhoder
- suitable for screwing (including screws and dowels) or gluing (GROHE QuickGlue S 41 247 000 sold separately - 2 x needed)
- holding force: max. 20 kg
- the specified holding capacity is valid for static (slowly applied) load and intended use only

34 237 002 PRECISION TREND DUSJTERMOSTAT SETT 1/2"



RESERVEDELER , september 2014 – now

- 1: Grep (Spare part-nr. 47992000)
- 2: Keramisk overdel 1/2" (Spare part-nr. 45346000)
- 2.1: O-ring Ø18,2 x Ø1,7 (Spare part-nr. 0392400M)
- 3: Festering (Spare part-nr. 47743000)
- 4: Termostatelement 1/2" (Spare part-nr. 47439000)
- 5: Race (Spare part-nr. 47975000)
- 6: Tilbakeslagsventil (Spare part-nr. 08565000)
- 7: Tilbakeslagsventil (Spare part-nr. 47189000)
- 7.1: Sil (Spare part-nr. 0726400M)
- 7.2: Tilbakeslagsventil (Spare part-nr. 08565000)
- 7.3: O-ring Ø17 x Ø2 (Spare part-nr. 0305500M)
- 8: S-tilslutning (Spare part-nr. 12075000)
- 8.1: Tetning (Spare part-nr. 0138600M)
- 8.2: Rosett (Spare part-nr. 0221000M)
- 9: Holder for dusjstang (Spare part-nr. 48095000)
- 10: Hånddusjholder/glideelement (Spare part-nr. 12140000)
- 11: Holder for dusjstang (Spare part-nr. 48097000)
- 12: Sil (Spare part-nr. 0700200M)
- 13: GROHE TurboStat patron 1/2" (Spare part-nr. 47175000)*
- 14: Forlenger DN 20, 20 mm (Spare part-nr. 0713000M)*
- 15: Utliningssskive (Spare part-nr. 48051000)*
- 16: Pipenøkkel (Spare part-nr. 19332000)*
- 17: Spesialnøkkel (Spare part-nr. 19377000)*

* Optional accessories