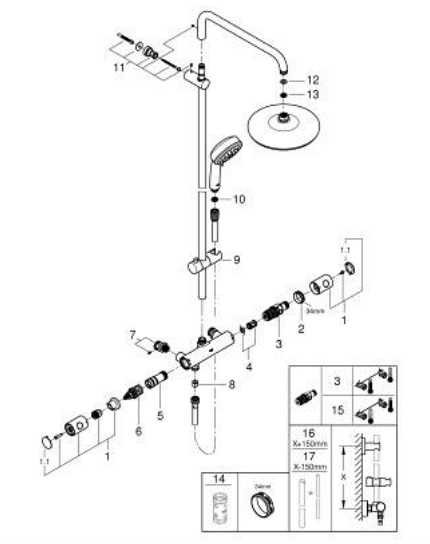


26 217 001 TEMPESTA COSMOPOLITAN SYSTEM 210 SHOWER SYSTEM 1/2" WITH THERMOSTAT 160 CC FOR WALL MOUNTING

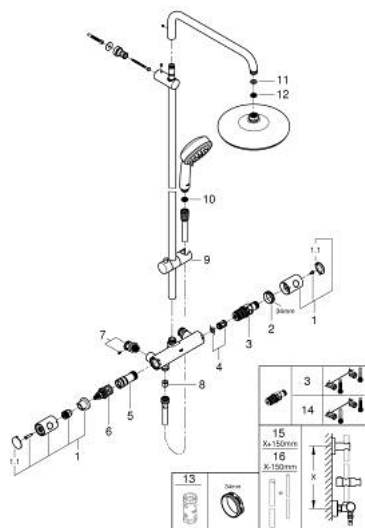


RESERVEDELER , april 2018 – now

- 1: Grep 1/2" (Spare part-nr. 47984000)
- 1.1: Dekkplate (Spare part-nr. 6458500M)
- 2: Festering (Spare part-nr. 47743000)
- 4: Termostatelement 1/2" (Spare part-nr. 47439000)
- 5: Foringsrør til ny GroheTherm (Spare part-nr. 47751000)
- 6: Aquadimmer (Spare part-nr. 12433000)
- 7: s-union (Spare part-nr. 47888000)
- 8: Tilbakeslagsventil (Spare part-nr. 08565000)
- 9: Hånddusjholder/glideelement (Spare part-nr. 12140000)
- 10: Sil (Spare part-nr. 0700200M)
- 11: Holder for dusjstang (Spare part-nr. 48423000)
- 12: Tetning Ø18,5 x Ø12 x 2 (Spare part-nr. 0138900M)
- 13: Sil (Spare part-nr. 48007000)
- 14: Pipenøkkel (Spare part-nr. 19332000)*
- 15: GROHE TurboStat patron 1/2" (Spare part-nr. 47175000)*
- 16: Dusjstang for ettermontering (Spare part-nr. 48053000)*
- 17: Dusjstang for ettermontering (Spare part-nr. 48054000)*

* Optional accessories

26 217 001 TEMPESTA COSMOPOLITAN SYSTEM 210 SHOWER SYSTEM 1/2" WITH THERMOSTAT 160 CC FOR WALL MOUNTING



RESERVEDELER, juli 2016 – april 2018

- 1: Grep 1/2" (Spare part-nr. 47984000)
 - 1.1: Dekkplate (Spare part-nr. 6458500M)
 - 2: Festering (Spare part-nr. 47743000)
 - 4: Termostatelement 1/2" (Spare part-nr. 47439000)
 - 5: Foringsrør til ny GroheTherm (Spare part-nr. 47751000)
 - 6: Aquadimmer (Spare part-nr. 12433000)
 - 7: s-union (Spare part-nr. 47888000)
 - 8: Tilbakeslagsventil (Spare part-nr. 08565000)
 - 9: Hånddusjholder/glideelement (Spare part-nr. 12140000)
 - 10: Sil (Spare part-nr. 0700200M)
 - 11: Tetning Ø18,5 x Ø12 x 2 (Spare part-nr. 0138900M)
 - 12: Sil (Spare part-nr. 48007000)
 - 13: Pipenøkkel (Spare part-nr. 19332000)*
 - 14: GROHE TurboStat patron 1/2" (Spare part-nr. 47175000)*
 - 15: Dusjstang for ettermontering (Spare part-nr. 48053000)*
 - 16: Dusjstang for ettermontering (Spare part-nr. 48054000)*
- * Optional accessories