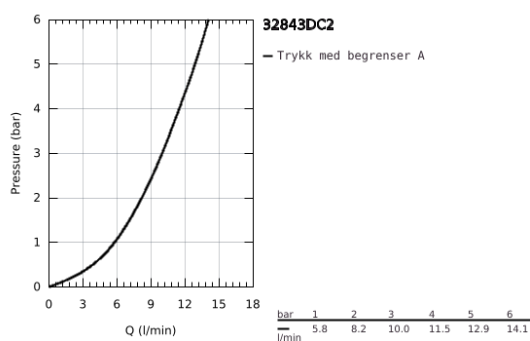
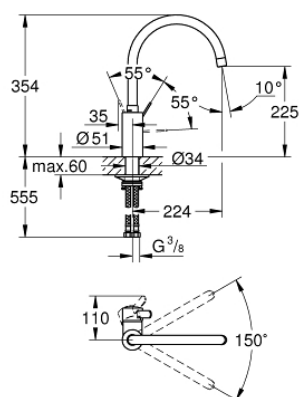


32 843 DC2 EUROSMART COSMOPOLITAN KJØKKENARMATUR



PRODUKTBESKRIVELSE

- Colour: supersteel
- høy tut
- etthullsmontasje
- GROHE Long-Life-overflate
- GROHE SilkMove 35 mm keramisk Patron
- innvendig isolerte vannveier - bly- og nikkelfri
- perlator
- variable justerbar volumbegrenser
- svingbar rørtut
- svingfelt 150°
- fleksible tilkoblingsslanger
-
- maximum flow rate (at 3 bar): 10 l/min



32 843 DC2 EUROSMART COSMOPOLITAN KJØKKENARMATUR

RESERVEDELER , april 2020 – now

- 1: Håndgrep (Spare part-nr. 46683DC0)
 - 2: Perlator (Spare part-nr. 48418DC0)
 - 3: Patron (Spare part-nr. 46374000)
 - 4: Monteringssett (Spare part-nr. 48477000)
 - 5: Pipenøkkel (Spare part-nr. 19332000)*
- * Optional accessories

